

# SAM Art Card

with Jamie Marcetic

# sam

Shepparton Art Museum

Jamie Marcetic lives in Shepparton on Yorta Yorta Country in Victoria. Jamie likes to take inspiration from media he grew up watching on TV, like the Simpsons and David Lynch films, to create surreal art that is a mixture of the imagined and reality.



**ages:** kids and families

**Key words:** surreal, illustration, cartoon

## play

### Let's play a game of weird and whacky monsters!

## you will need

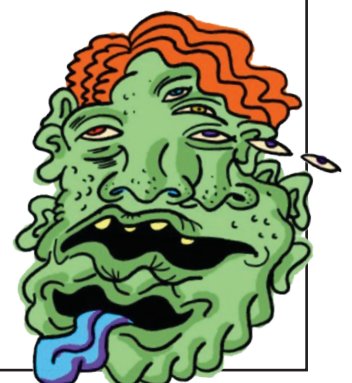
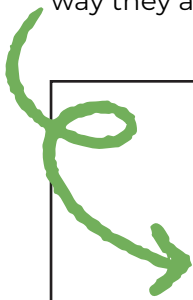
- pencils / crayons
- textas / pens
- paint
- dice

## observe

Do you read comics or watch cartoons? Do you have a favourite picture book or read stories that have illustrated characters? What do the characters have in common? Do you like the way they are drawn? What would you change?

## steps

1. What will your monster's body look like? Draw a large shape to begin.
2. Roll the dice. What number did you roll? If you rolled a three, draw three heads on your body, if you rolled a two, draw two and so on.
3. Roll the dice again. Add the number of eyes you rolled.
4. Roll the dice again. Add the number of mouths you rolled.
5. Roll the dice again. Add the number of noses you rolled.
6. By now your monster should be looking very whacky. Some more things you could roll the dice for are the monster's ears, ponytails, tongues, arms and legs!
7. Colour in your whacky monster in unusual colours, don't be afraid to experiment!



Share your monsters with us!  
#SAMSketch



530 Wyndham Street, Shepparton VIC 3630  
t (03) 4804 5000 e info@sheppartonartmuseum.com.au  
sheppartonartmuseum.com.au