

# SAM Art Card

with Sophie Wilson

# sam

Shepparton Art Museum

Sophie Wilson lives in Shepparton on Yorta Yorta Country in Victoria. Sophie likes to tap into her creativity through the energy we find in people and places.

**ages:** kids and families

**Key words:** symmetrical, energy, pattern

## explore

Where do you find the energy that puts a smile on your face? Is it in the sandwich you had for lunch? Do you soak it up when you're in the sun? Maybe you feel it between your toes when you're barefoot in the grass! Go exploring and write down things that makes you smile!

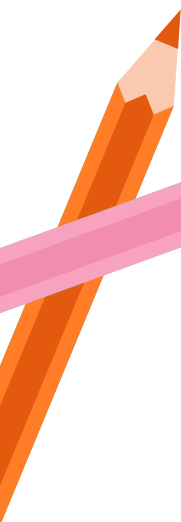
## What made you smile today and gave you energy?

1. \_\_\_\_\_
2. \_\_\_\_\_
3. \_\_\_\_\_

## draw

Use the list you have created to design your own kaleidoscope drawing. Imagine you are looking through a kaleidoscope that holds different shapes and forms found in the places you felt the happiest today. Use our guide below to create your own drawing of shapes, patterns, and symbols!

use the back of this page to create your kaleidoscope drawing



one 'block'

## you will need

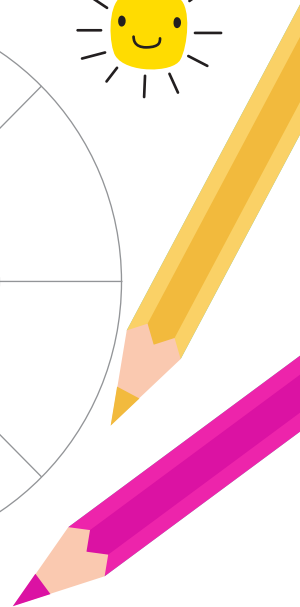
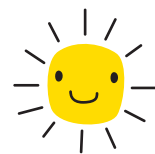
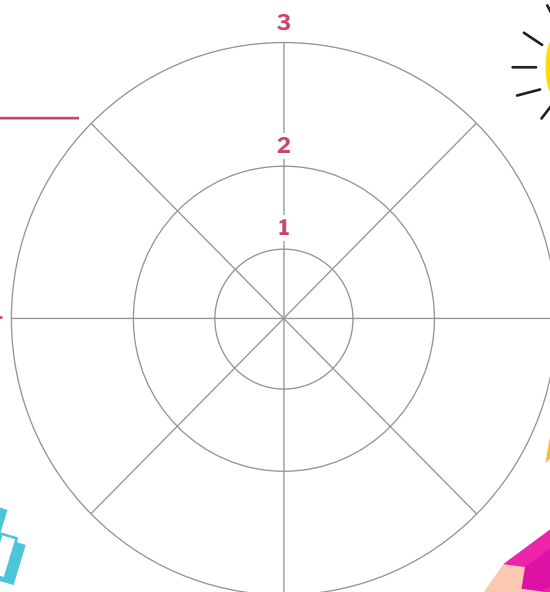
- a pencil
- coloured pencils
- a ruler

## steps

1. Using the template below, starting in the inner circle and draw a shape or symbols from your list above. Make sure your drawing goes all the way to the edge of the block.
2. Move to the next block and draw your shape again. Remember to connect the shapes to create a pattern.
3. Repeat for all the blocks until you have a pattern in the shape of a ring!
4. Think of another shape or object found in the list above.
5. Repeat steps 1 – 3 for the surrounding circle. Make sure that you connect the outlines of the shapes to the previous circle of shapes.
6. By now you should see a nice pattern emerging. Keep going around the circle until you have filled in all the blocks!

## colour

Use coloured pencils to bring your kaleidoscope drawing to life. Choose the colours that make you the happiest.



Share your kaleidoscope drawing with us!  
#SAMSketch



530 Wyndham Street, Shepparton VIC 3630  
t (03) 4804 5000 e info@sheppartonartmuseum.com.au  
sheppartonartmuseum.com.au

# kaleidoscope drawing

